

CRX AIR



The CRX AIR series provides a low-volume cymbal option that is ideal in a variety of situations from practice rooms and teaching studios to small clubs. Available in a choice of popular and affordable sizes and box sets.

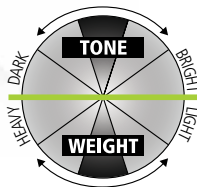
CRX AIR AVAILABILITY

	6"	8"	9"	10"	11"	12"	13"	14"	15"	16"	17"	18"	19"	20"	21"	22"	23"	24"	
Hi-Hat							●	●											
Crash										●									
Crash-Ride												●							
Ride														●					

CRX AIR BOX SETS

	Hi-Hat		Crash	Crash-Ride	Ride
	13"	14"	16"	18"	20"
SET 1	●		●	●	
SET 2		●	●	●	●

note: CRX AIR sets include a cymbal bag | ● POPULAR SIZE



Learn more!



CRX AIR Series

CRX Prime



CRX Prime cymbals are made from B8 Bronze and offer excellent quality and value for younger players.

CRX PRIME AVAILABILITY

	6"	8"	9"	10"	11"	12"	13"	14"	15"	16"	17"	18"	19"	20"	21"	22"	23"	24"	
Hi-Hat							●	●											
Crash										●									
Crash-Ride												●							
Ride														●					

CRX PRIME BOX SETS

	Hi-Hat		Crash	Crash-Ride	Ride
	13"	14"	16"	18"	20"
SET A	●			●	
SET B		●	●		●
SET C	●	●	●	●	●

● POPULAR SIZE

CUSTOM CLASSIC
 POWERFUL BLEND EXOTIC
 BRIGHT CONSISTENT
 HIGH-CONTRAST THUNDER
 CRUNCHY HYBRID DARK
 DURABLE VIBES SMOOTH
 DRUMS
 STABLE
 DIVERSE
 LOW
 ARTICULATE INTENSE
 MODERN PERSONALITY MUSICAL
 SUSTAIN TRADITIONAL WARM
 PROJECTION PROGRESSIVE
 VIBRANT
 CRASH-RIDE LIGHTNING
 TRASHY REACTIVE
 CONTEMPORARY QUALITY SIZZLE
 HI-HATS SPLASH CHINA

CUSTOM CLASSIC

HAND-CRAFTED
b20 bronze
 HAND-HAMMERED

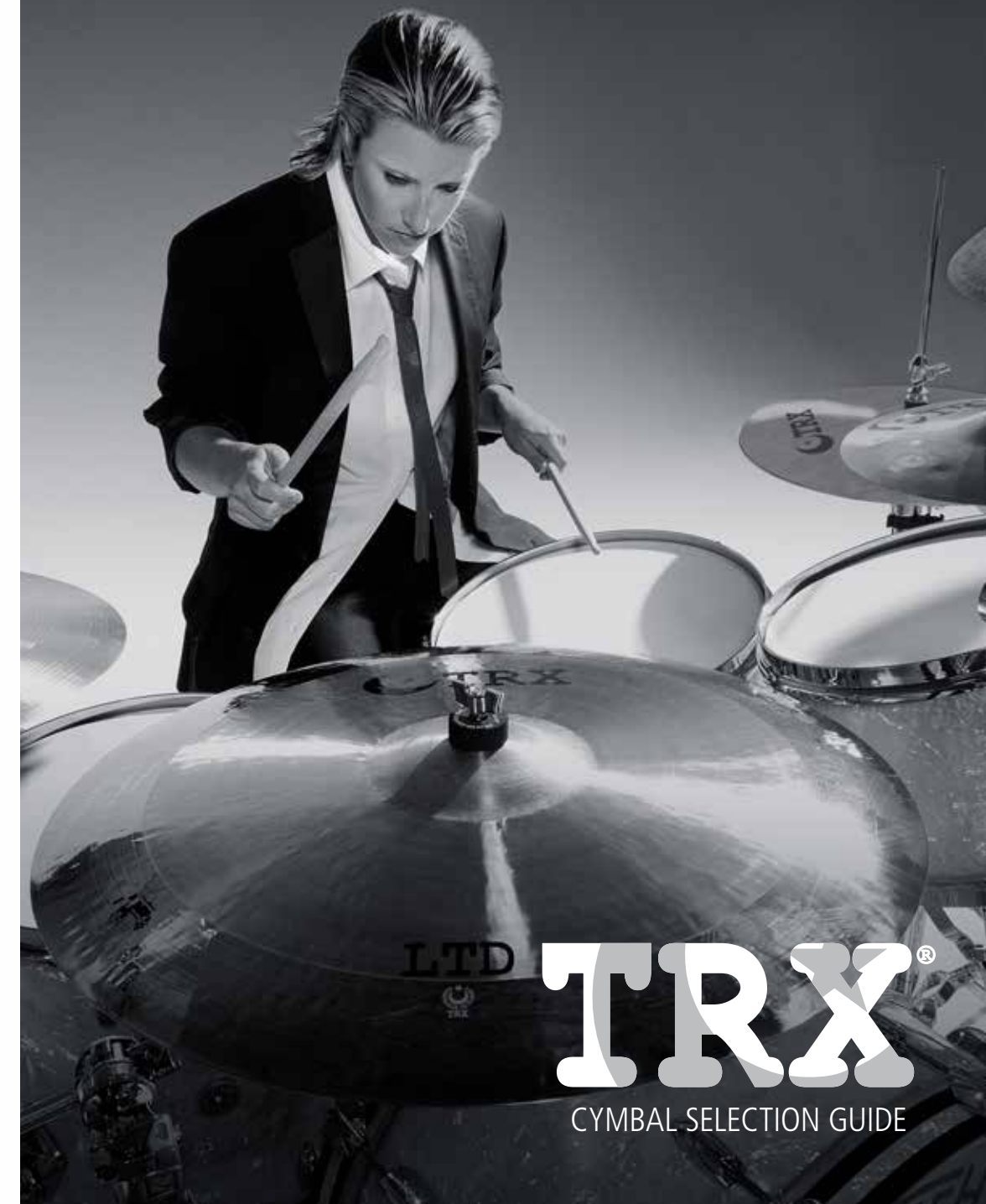
HIGH CONTRAST

TRX CYMBAL CO. LLC
 Studio City, CA 91604 USA
 www.trxcymbals.com • @trxcymbals

cover: **Chloe Jasper** (Wallace)
 Thanks to: Chris Cuffaro (photography) • Suna Myles (make-up) • Andrew Shreve (Grestch Drums) • EDGE Studios LA

©2024 TRX Cymbal Co. LLC

CUSTOM CLASSIC



TRX
 CYMBAL SELECTION GUIDE



Brian Nolan
Everclear



Elijah Wood
Shania Twain



Hayley Brownell
Olivia Rodrigo



Josh Baker-Dukes
Mariah Carey



Nasrine Rahmani
Diego Guerrero



Ricardo Cortez
Ha-Ash



Streeter
Jennifer Lopez



Tommy The Villain
New Year's Day

The TRX Cymbal Co. was founded nearly 20 years ago with the goal of combining the long-established traditions of cymbal making with progressive, new designs. Our mission was create a range of studio-quality, "Custom-Classic" cymbals that would better meet the needs of modern drummers and the music they play. This catalog features the results of those efforts along with the full range of TRX Cymbals... and many of the drummers who play them.

The history of cymbals begins about 5,000 years ago in Mesopotamia (aka The Cradle of Civilization) when ancient metallurgists discovered that they could make their tools and weapons stronger by combining copper with a little tin. They called their new alloy "Bronze" and it was an instant success— so much so that the period became known as the Bronze Age.

Bronze was initially used for military and religious purposes but gradually found its way into musical instruments such as bells and cymbals. Centuries later, cymbals made from Bronze grew increasingly popular and important in secular music as civilization and culture evolved during the Classical music era (1700 to 1850 AD).

By the late 1800's, as new forms of popular music and the modern drumset took shape, cymbals began to take on the main time-keeping role. Bronze cymbals have become the standard of sound and performance for virtually every new style of music ever since.

Today, cymbals made from the highest quality, B20 Bronze (80% copper and 20% tin) and perfected by generations of cymbalsmiths are overwhelmingly

preferred by the world's leading drummers and percussionists.* This time-tested formula of mixing, casting, tempering and handcrafting is used exclusively for the production of TRX and TRX Special Edition cymbals.

In addition to embracing the cymbal-making methods and materials that set the standard for centuries, TRX is equally committed to creating cymbal innovations that are setting new standards. These include:

- Applying the versatility and blendability of B20 Bronze to expand the tonal spectrum as well as the quality, quantity and diversity of cymbal sounds.
- Introducing the High Contrast™ concept and moving away from the conventional

method of selecting a cymbal set-up of similar sounding cymbals to a more advanced, "mix-and-match" system of choosing different sounding cymbals based on their contrasting tonal qualities and musical relevance in multiple genres.

- Developing progressive, new cymbal designs such as cross-matched hi-hats, asymmetrically-vented crashes and removable rivets as well as easily stackable cymbal types and more.

CUSTOM CLASSIC




The fundamental characteristics of a cymbal's sound and performance (pitch, power, tone quality, articulation, sustain, durability, etc.) are primarily determined by its size and weight. Information on how these and other essential factors can be modified to influence a cymbal's performance and affect its sound is detailed in the guide to cymbal design, below.

In addition to offering a wide range of cymbal types, sizes, series and sounds, TRX understands that finding the right cymbal for the music you play can sometimes require a more individual, more personalized approach. For these situations, the TRX Custom shop offers the opportunity for drummers to design their own cymbals and have them custom-crafted by our master cymbalsmiths.

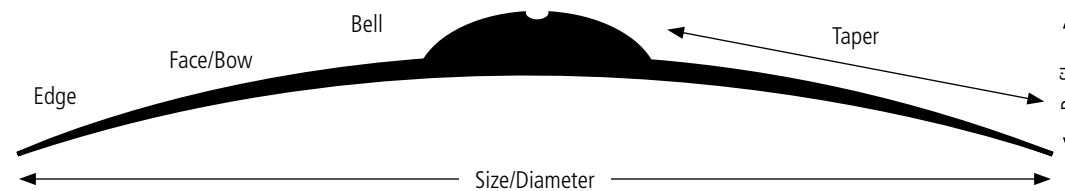
THE ELEMENTS OF CYMBAL DESIGN

SIZE		WEIGHT	
smaller	larger	thinner	thicker
higher pitch	lower pitch	lower pitch darker tone more sustain less durability	higher pitch brighter tone more articulation more durability
BELL		LATHING	
smaller	larger	unlathed	lathed
wetter/more overtones	drier/less overtones	more complex	more focused
HAMMERING		FINISH	
regular	deep	natural	brilliant
darker	drier/trashier	darker/drier	brighter/wetter
		EFFECTS	
		venting	rivets
		trashy/shorter decay	sizzle/longer decay



Visit the TRX Custom Shop to create your ultimate cymbal.

*Other Bronze formulations are used for gongs (B24), semi-pro cymbals (B18, B12, B10) and student-model cymbals (B8).

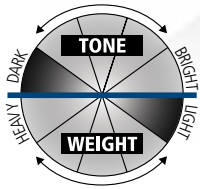


- CUSTOM 3
- CLS 4
- XX 5
- DRK 6
- NDK 7
- X 8
- MDM 9
- SFX 10
- BLENDS 12
- ALT 13
- LTD 14
- ICE 15
- BRT 16
- TOUCH 17
- SE 18
- CRX 21

CLS Series

NEW!

XX Series



Designed to recreate the classic cymbal sounds from the 1950s and 60s that remain popular with today's young drummers, CLS Series cymbals combine ultra-light weights, traditional lathing and hammering and an exclusive "Retro-Gray" finish. Unlike most modern Hi-Hats, CLS top and bottom Hi-Hat cymbals are the same weight for a more vintage sound. CLS cymbals come pre-drilled to accept our optional, removable rivets.

CLS SERIES AVAILABILITY

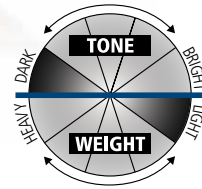
	6"	8"	9"	10"	11"	12"	13"	14"	15"	16"	17"	18"	19"	20"	21"	22"	23"	24"	
Hi-Hat									●	●	●	●							
Crash																			
Crash-Ride																			

● POPULAR SIZE

Learn more!



TRX CLS Series



The new XX Series are extra-thin cymbals with micro-lathing and a combination of standard, deep and extra-deep hammering. Dark, trashy and controlled yet extremely versatile, the 20", 21" and 22" Crash-Ride models can effectively be used as Crashes, Rides, Crash-Rides and Effects cymbals in both traditional and contemporary playing situations. Also available in 14" and 15" Hi-Hats.

XX SERIES AVAILABILITY

	6"	8"	9"	10"	11"	12"	13"	14"	15"	16"	17"	18"	19"	20"	21"	22"	23"	24"
Hi-Hat																		
Crash-Ride																		

* Special Order | ● POPULAR SIZE

Learn more!



TRX XX Series



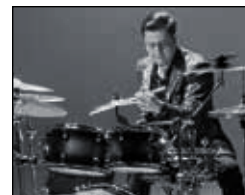
Antoine Fadavi
King Princess



Bill Pagarán
Broken Walls



Eak
The Fix



Efrén Díaz
Virlan Garcia



Joe Mendez
The Reel Band



Lada Obradovic
Obradovic-Tixier Duo



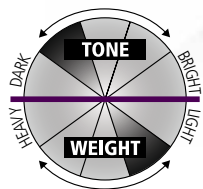
Pietro Amico
Pupi di Surfaro



Will Gorin
Slothrust

DRK Series

NDK Series



Thin and cast from our versatile B20 Bronze, the TRX DRK Series is known for its dark, warm, earthy sound. Along with a balanced blend of depth, dryness and definition, the line's tonal tendencies are further enhanced by a distinctive, low-profile design, natural (unlathed) finish and hand-hammering. This TRX original is available in a wide range of sizes and models.



The NDK (aka "New DRK") Series features extra-thin castings and traditional hammering along with an unlathed, sandblasted playing surface and a lathed underside. The result is a warm, dark, dry tone that is appropriate in a wide range of musical situations. NDK Hi-Hats, Crashes and Crash-Rides come standard with 3 sets of holes that accommodate our optional, removable rivets.

DRK SERIES AVAILABILITY

	6"	8"	9"	10"	11"	12"	13"	14"	15"	16"	17"	18"	19"	20"	21"	22"	23"	24"	
Hi-Hat				*		*	●	●	●										
Crash											●	●	●	●					
Ride															●	●	●		
Flat-Ride													●	●	●	●			
Splash		●		●		●													
China						●	●	●	●	●	●	●	●	●	●	●	●	●	*
Thunder				●		●	●	●	●	●	●	●	●	●	●	●	●	●	●

†also available in Thunder China | * Special Order | ● POPULAR SIZE

NDK SERIES AVAILABILITY

	6"	8"	9"	10"	11"	12"	13"	14"	15"	16"	17"	18"	19"	20"	21"	22"	23"	24"	
Hi-Hat								●	●	●									
Crash											●	●							
Crash-Ride													●	●	●	●	●	●	●

● POPULAR SIZE

Learn more!



TRX DRK Series

Learn more!



TRX NDK Series



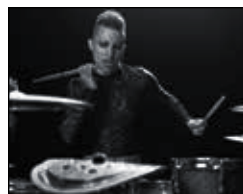
Dametries Holmes, Jr.
independent



David Smith
Reuben Studdard



Erick Carrillo
independent



Helly
Hand Of Juno



Ito Colon
Yolandita Monge



Jacob Randall
King Oyster



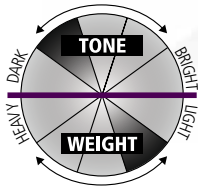
Sheila Klotz
SoMar Drummers



Victoria Gridzhan
independent

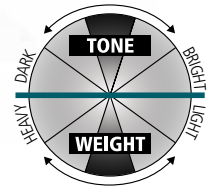
X Series

MDM Series



The X Series was originally developed to celebrate our 10th Anniversary in 2016. It has gone on to become one of our most popular lines. Based on the design of the original MDM Series, its lighter weight and large, extra-deep hammering gives the X Series a darker, trashier, more exotic sound— adding a distinctive new voice to the high-contrast spectrum.

Medium-weight with traditional lathing and hammering, the TRX MDM Series is an all-purpose line developed to meet a diversity of modern and classic musical needs. MDM cymbals provide exceptional sound and performance in a variety of drumming applications— bringing the quality, consistency, individuality and personality of handcrafted cymbals to today's drummers.



Learn more!



TRX X Series

X SERIES AVAILABILITY

	6"	8"	9"	10"	11"	12"	13"	14"	15"	16"	17"	18"	19"	20"	21"	22"	23"	24"	
Hi-Hat							●	●	●										
Crash											●	●	●	●	●				
Crash-Ride																			
Light-Ride															●	●	●		
Splash		●		●															
China																			

● POPULAR SIZE

MDM SERIES AVAILABILITY

	6"	8"	9"	10"	11"	12"	13"	14"	15"	16"	17"	18"	19"	20"	21"	22"	23"	24"	
Hi-Hat				*	*	*	●	●											
Crash											●	●	●	●					
Crash-Ride														●	●	●			
Ride														●	●	●			
Splash		●		●		●													
China						●	●	●	●	●	●	●	●	●	●	*	*		

* Special Order | ● POPULAR SIZE

Learn more!



TRX MDM Series



Branson Summers
independent



Bryce Mileto
Sisters Doll



Jack Mudd
Emblem 3



Jess Goodwin
Dreamers



JJ Phillips
Freedom Church



Pauline Roberts
The Furious Bongos



Val Sepulveda
mxmtoon/Sin Bandera



Warren Grant
Albert Cummings

SFX Series



The SFX Series is a collection of innovative cymbals and sounds. Based on the realization that, like Stacks, Hi-Hats combine 2 cymbals to create a specific sound, our experimentation with different cymbal combinations resulted in the DRK/BRT, DRK/X and STORM "cross-matched" Hi-Hats. The SFX Series also includes Thunder Slap and Thunder Clap Stacks (DRK Thunder, BRT and DRK plates), Storm Hi-Hats (Thunder & Lightning) and heavy T-Bells.

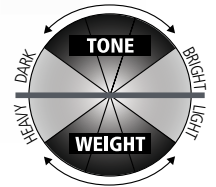
A relatively recent development, Stacks are 2 or more cymbals that are placed on top of each other to create a shorter, more extreme, more aggressive sound. Stacks generally fall into two categories:



1. "Crunch" (short decay) — A Splash, Crash or Vented cymbal on a China cymbal.
2. "Sizzle" (medium decay) — A Splash, Crash or Vented cymbal on a Splash, Crash or Vented cymbal.

Stack cymbals can be the same size or different sizes as long as the entire edge of the top cymbal makes contact with surface of the bottom cymbal. All other factors being equal, a smaller Stack will be higher in pitch than a larger one.

To create the unique, extra-trashy tonal character of our TRX Thunder and Lightning cymbals we started with DRK and BRT Series splashes, crashes and chinas and then applied an asymmetric pattern of vents. The cymbals can be used individually or stacked above and below other cymbal sizes and types.



SFX SERIES AVAILABILITY

	7"	8"	9"	10"	11"	12"	13"	14"	15"	16"	17"	18"	19"	20"	21"	22"	23"	24"
A DRK/BRT Hi-Hat							•	•	•	•								
B DRK/X Hi-Hat							•	•	•	•								
C Storm Hi-Hat						•			•									
D T-Bell			•															
E Thunder Splash				•		•												
F Thunder Crash											•							
G Thunder China														•				
H Lightning Splash				•		•												
I Lightning Crash											•			•				
J Lightning China														•				
K Thunder Slap																		
L Thunder Clap																		

• POPULAR SIZE

Learn more!



TRX SFX Series



Daria Slesareva
independent



Darren Cesca
Goratory



Gary Flores
Alejandro Gernandez



Gradio Cervantes
independent



Grigory Sinyakov
Ravdina



Li Linan
independent



Michael Lupo
Jax Hollow



Paquito Aranda
The Citie/Twin Seas

Blends Series

ALT Series



Blends Series cymbals combine elements of the MDM and BRT lines to add another tonal step in the sonic spectrum. The lathed outer area combined with a polished, unlathed center section creates a range of "hybrid" cymbals with a balance of warmth and brightness along with a sweet sound that blends well with other cymbals in both conventional and mix-and-match set-ups.

Learn more!



TRX Blends Series

Blends SERIES AVAILABILITY

	6"	8"	9"	10"	11"	12"	13"	14"	15"	16"	17"	18"	19"	20"	21"	22"	23"	24"	
Hi-Hat							●	●	●										
Crash										●	●	●	●	●	●				
Ride															●	●	●	●	●
Splash		●		●		●													

● POPULAR SIZE



Colin Young
God's Hate



David Curry
Southern Soul Tour

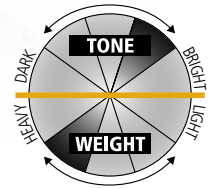


Ilse Santana
2000's Forever



Matt Arsenault
Honey Revenge

Incorporating heavier castings, a raw bell and a micro-lathed playing surface with multi-level hammering, TRX ALT Series cymbals are designed to offer an alternative for more aggressive mainstream and modern styles. They are stronger, brighter and more responsive than traditional general purpose cymbals— setting a new standard for all-around sound and performance.



ALT SERIES AVAILABILITY

	6"	8"	9"	10"	11"	12"	13"	14"	15"	16"	17"	18"	19"	20"	21"	22"	23"	24"	
Hi-Hat				*	*	*	●	●											
Crash										●	●	●	●	●					
Ride														●	●	●	●		
BigBell-Ride															●				
Splash	●	●		●		●													
China						●	●	●	●	●	●	●	●	●	●	*	*		

* Special Order | ● POPULAR SIZE

Learn more!



TRX ALT Series



Michael Levine
Peyton Parrish



Ody Avgoulis
Project Renegade



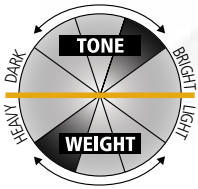
Ricardo Huerta
Belinda



Tiago Lopes
The Redbeds

LTD Series

ICE Series



The LTD Series is another TRX exclusive. Based on the ALT Series, the hybrid-design of LTD cymbals adds a highly-polished outer edge for a bit more brightness and projection. Available in a limited selection of Chinas and Hi-Hats as well as 18" to 23" Crash-Rides that provide a smooth, rich tone that is highly recommended for playing situations where sustained wash-ride time-keeping is appropriate.

LTD SERIES AVAILABILITY

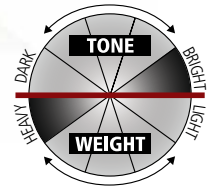
	6"	8"	9"	10"	11"	12"	13"	14"	15"	16"	17"	18"	19"	20"	21"	22"	23"	24"	
Hi-Hat								●	●										
Crash-Ride													●	●	●	●	●	●	
China														●	●				

● POPULAR SIZE

Learn more!



TRX LTD Series



Offering our widest selection of types and sizes, ICE Series cymbals are medium-heavy with micro-lathing, multi-level hammering and a brilliant, Diamond™ finish. They are known for their bright, powerful, crystal clear tone and are recommended for many musical styles, from Gospel/R&B, Pop and Rock to Latin and Metal. Now also available in a range of MegaBell and Flat-Ride models.

ICE SERIES AVAILABILITY

	6"	8"	9"	10"	11"	12"	13"	14"	15"	16"	17"	18"	19"	20"	21"	22"	23"	24"	
Hi-Hat				*	*	*	●	●											
Crash											●	●	●	●					
Crash-Ride														●	●	●	●	●	
Ride														●	●	●	●	●	
MegaBell-Ride													●	●	●	●	●	●	
Flat-Ride												*	*			●			
Splash	●			●			●												
China							●	●	●	●	●	●	●	●	●	*	*	*	

* Special Order | ● POPULAR SIZE

Learn more!



TRX ICE Series



Ben Gasan
Harper



Brandon Khoo
independent



Lindsey Raye Ward
independent



Marco Castro
Gloria Trevi



Mike Diggs
The Gutter Daisies



Mikey Cox
Coal Chamber



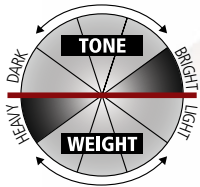
Subin
independent



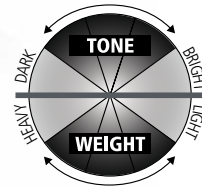
Zach Kelsch
Atrium

BRT Series

TOUCH Series



Extra-heavy with a brilliantly polished, unlathed and over-hammered playing surface, the TRX BRT Series provides a full range of cymbals with upper-end tonal frequencies and an intense, powerful sound. However, even though they provide increased presence and projection in high-volume, high-energy drumming situations, BRT Series cymbals are also extremely versatile and incredibly musical.



Developed in collaboration with world-renowned percussionist Nasrine Rahmani and our master cymbal smiths, the new TOUCH Series is a collection of cymbals designed and custom-crafted to be played with fingers and hands as well as sticks. The cymbals are rich, warm, extremely sensitive to the touch and recommended for World, Latin, pop and a wide variety of modern and vintage musical styles.

Learn more!



TRX BRT Series

BRT SERIES AVAILABILITY

	6"	8"	9"	10"	11"	12"	13"	14"	15"	16"	17"	18"	19"	20"	21"	22"	23"	24"	
Hi-Hat				*		*	•	•	•										
Crash										•	•	•	•	•	•				
Crash-Ride															•	•	•		
Ride														•	•	•			
BigBell-Ride															•				
Splash		•		•															
China						•	•	•	•	•	•	•	•	•	•	•	•	*	*
Lightning				•		•				•	•	•	•	•	•	•			

†also available in Lightning China | * Special Order | ● POPULAR SIZE

TOUCH SERIES AVAILABILITY

	6"	8"	9"	10"	11"	12"	13"	14"	15"	16"	17"	18"	19"	20"	21"	22"	23"	24"	
Hi-Hat							•†												
Crash								•											
Crash-Ride													•						
Ride														•					
Splash		•	•			•													

†available in Dark and Bright models | ● POPULAR SIZE

Learn more!



TRX TOUCH Series



Christian Gomez
Parazit



Connor Allen
Taylor Acorn



Samantha Ambrosio
Cardiel



Yeismel Grandal
Emily Estefan/Willy Chirino



Gris Mendoza
independent



JP Castillo
Jennifer Lopez



Noriko Terada
Googoosh

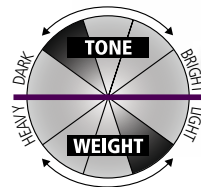


Vincent Pierce
independent

Special Edition DX

Special Edition KX

Special Edition AX



Recommended for drummers of all ages and skill levels, Special Edition cymbals offer high-quality sound and performance at a midrange price. The DX Series features a dark, dry tone and comes in a full assortment of types and sizes, including Splashes, Chinas and Thunders.

SPECIAL EDITION DX SERIES AVAILABILITY

	6"	8"	9"	10"	11"	12"	13"	14"	15"	16"	17"	18"	19"	20"	21"	22"	23"	24"	
Hi-Hat																			
Crash																			
Ride																			
Splash																			
China																			
Thunder																			

SPECIAL EDITION DX SERIES BOX SETS

	Hi-Hat			Crash			Ride		
	13"	14"	15"	16"	18"	20"	20"	21"	22"
SET 1	[●]			●					●
SET 2		[●]		●	●				●
SET 3			[●]	●	●	●			●

● POPULAR SIZE



Special Edition DX Series

The two-tone, "hybrid" design of the Special Edition KX Series creates a well-balanced, midrange sound that meets the needs of many classic and contemporary drumming styles. The cymbals are available in a wide range of models and a choice of popular box set configurations.

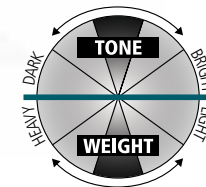
SPECIAL EDITION KX SERIES AVAILABILITY

	6"	8"	9"	10"	11"	12"	13"	14"	15"	16"	17"	18"	19"	20"	21"	22"	23"	24"	
Hi-Hat																			
Crash																			
Ride																			
Splash																			
China																			
Thunder																			

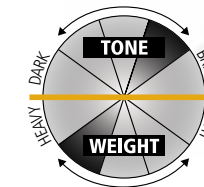
SPECIAL EDITION KX SERIES BOX SETS

	Hi-Hat			Crash			Ride		
	13"	14"	15"	16"	18"	20"	20"	21"	22"
SET 1	[●]			●					●
SET 2		[●]		●	●				●
SET 3			[●]	●	●	●			●

● POPULAR SIZE



Special Edition KX Series



Special Edition AX Series

Based on one of the world's most popular designs, Special Edition AX cymbals combine medium-heavy castings for a bright, powerful, ear-catching sound with a highly-polished finish for an eye-catching appearance. The AX series joins the DX and KX lines to offer a choice of tonal options and superior quality at an affordable price.

SPECIAL EDITION AX SERIES AVAILABILITY

	6"	8"	9"	10"	11"	12"	13"	14"	15"	16"	17"	18"	19"	20"	21"	22"	23"	24"	
Hi-Hat																			
Crash																			
Ride																			
Splash																			
China																			
Lightning																			

SPECIAL EDITION AX SERIES BOX SETS

	Hi-Hat			Crash			Ride		
	13"	14"	15"	16"	18"	20"	20"	21"	22"
SET 1	[●]			●					●
SET 2		[●]		●	●				●
SET 3			[●]	●	●	●			●

● POPULAR SIZE



Alex Garma
Implode The Empire



Chris Martinez
Artifices



David Nevecny
Poetica



Dennis Holm
independent



Eric "Spaz" Lewis
Failure By Proxy



Fer Fuentes
independent



Flash Revell
independent



Javier Aponte
independent



Myra Gallarza
Bad Cop, Bad Cop



Ness De La O
independent



Rotten Rollin
Raven Gray



Rischar Jenkins
independent



Aira Deathstorm
Fiend



Alex Keys
Lost In Silence



Arejay James
Hue



Chris Champion
independent



Steve Volponi
independent



Tai Wright
independent



Tata Batera
Red Elvises



Taylor Young
NAILS



"Cutzoo" Ogletree
85 South Show



Daniel Watson
The Supremes



Don Vido
independent



Draven
Bullet To The Heart



Terrell Graham
independent



Tim Scott Jr.
independent



Virgilio Zaldivar
independent



Will Peacock
Cake Eater



Eli Mateo
Blue Light Bandits



Georges Octobouos
FLAW



Jair Martinez
independent



JJ Lassiter
independent



Josh Greene
independent



Kendall Lentz
Iniko



King Robinson, Jr.
independent



Megan Spencer
independent



Michael Taylor
independent



Mike Benj
independent



Mike Mahan
Chasing Desolation



Nick Bavaro
Ryder



NM Grizz
Redd Star



Penny Larson
Hypaspace



Quenice Coaxum
Kalipop



Steve Kleisath
Further Seems Forever

TRX Artist Index

name	page	name	page	name	page
Aira Deathstorm	23	Gary Flores	10	Nasrine Rahmani	2
Alex Garmas	18	Georges Octobous	23	Ness Dela O	20
Alex Keys	23	Gradio Cervantes	10	Nick Bavaro	23
Antoine Fadavi	4	Grigory Sinyakov	11	NM Grizz	23
Arejay James	23	Gris Mendoza	17	Noriko Terada	17
Ben Gasan	14	Hayley Brownell	2	Ody Avgoulis	13
Bill Pagaran	4	Helly	6	Paquito Aranda	11
Brandon Khoo	14	Ilse Santana	12	Pauline Roberts	9
Branson Summers	8	Ito Colón	7	Penny Larson	23
Brian Nolan	2	Jack Mudd	8	Pietro Amico	5
Bryce Mileto	8	Jacob Randall	7	Quenice Coaxum	23
Chloe Arnaw	1	Javier Aponte	19	Ricardo "Oso" Cortez	3
Christian Champion	23	Jessica Goodwin	8	Ricardo Huerta	13
Christian Gomez	16	JJ Lassiter	23	Rischarad Jenkins	20
Chris	18	JJ Phillips	9	Rotten Rollin	20
Colin Young	12	Jair Martinez	23	Samantha Fulop	16
Connor Allen	16	Joe Mendez	5	Sheila Klotz	7
"Cutzoo" Ogletree	23	Josh Baker-Dukes	3	Steve Kleisath	23
Dametries Holmes, Jr.	6	Josh Greene	23	Steve Volponi	24
Daniel Watson	23	JP Castillo	17	Streeter	3
Daria Slesareva	10	Kendall Lentz	23	Tai Wright	24
Darren Cesca	10	King Robinson, Jr.	23	Tata Batera	24
David Curry	12	Lada Obradovic	5	Taylor Young	24
David Smith	6	Li Linan	11	Terrell Graham	24
Dennis Holm	18	Lindsey Ward	14	Tiago Lopes	13
Don Vido	23	Marco Castro	14	Tim Scott, Jr.	24
Draven	23	Matt Arsenaault	12	Tommy The Villain	3
Drummer Subin	15	Megan Spencer	23	Val Sepulveda	9
Eak	4	Michael Lupo	11	Victoria Gridzhan	7
Efren Diaz	4	Michael Taylor	23	Vincent Pierce	17
Eli Mateo	23	Mike Benj	23	Virgilio Zaldivar	24
Elijah Wood	2	Mike Diggs	15	Warren Grant	9
Eric Lewis	18	Mike Levine	13	Will Gorin	5
Erick Carrillo	6	Mike Mahan	23	Will Peacock	24
Fer Fuentes	19	Mikey Cox	15	Yeismel Gandal	16
Flash Revell	19	Myra Gallarza	20	Zhach Kelsch	15